

LAGUN TABLE LEG SYSTEM

PARTS INCLUDED

- Tabletop Mounting Plate (TMP)
- Arm (Horizontal piece)
- Leg (Vertical piece)

BRACKET OPTION (1 INCLUDED)

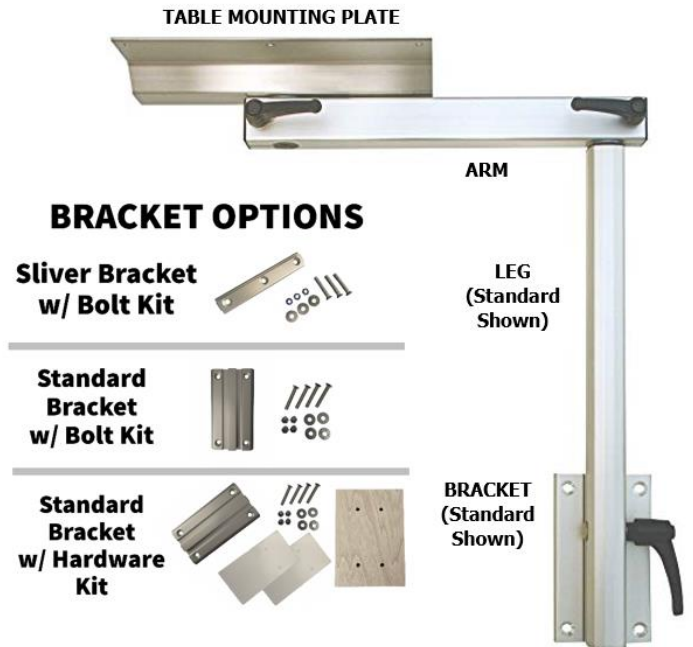
- Bracket with Bolt Kit (Sliver or Standard)
- Bracket with Hardware Kit: 1 Board/2 Wedges/4 Stainless Steel Bolts/4 Washers/4 Nuts

TOOLS NEEDED

- 12V Power Drill Gun
- 1/4" Drill Bit
- Phillip Drive Bit
- 6 #8 Panhead Screws for Tabletop Mounting Plate (Not Included) **NOTE:** Must be at least 1/2 the depth of the tabletop.

ADDITIONAL SUGGESTIONS

- Spacer/Shim/Wood Block
- #18 Tapered Lag Screws (instead of included bolts) **NOTE:** Make sure the screw/bolts used do not stick out and get caught on leg handle.



1. BRACKET INSTALLATION:

- Choose a solid vertical surface to install the bracket. **The system is only as solid as the bracket installation.** **NOTE:** The height of the bracket will add to the overall height of the system. Make sure there is enough clearance to be able to adjust the leg up and down. Some RV dinette cushions stick out, so you may need to purchase the optional hardware kit or a spacer/shim to be able to clear them.
- OPTIONAL: Use the board and/or shims to level the bracket (if needed).
- If mounting flush to vertical surface, shim the bracket out at least 1". **NOTE:** If skipped, you will not be able to swivel your system, as the junction where the arm and leg come together is 7/8".
- Use the enclosed bolts (or optional screws) to attach the bracket to the solid vertical surface. Make sure the bolts/screws do not protrude into or through anything before drilling. **NOTE:** The bracket is 7" high. You must have at least 1" of the slotted leg groove tightened onto the bracket for a stable system. The more of the leg groove tightened to the bracket, the more stable the system.

ARM HANDLES

- One releases the tabletop to swivel 360 degrees
- One releases the complete system to swivel 360 degrees

LEG HANDLE(S)

- Releases the vertical height adjustment **NOTE:** Be careful when releasing handle as gravity will pull the system down.

ALL HANDLES:

- **NOTE: Do not over tighten handles.**
- ALL Handles Untighten counterclockwise.
- ALL Handles Tighten clockwise.
- Pushing the button on the handle in allows you to reposition the handle and continue to tighten/untighten it.

HOW TO STORE SYSTEM:

- Remove leg and attach to underside of tabletop (See photo below. Photo shows a right-handed leg. A left-handed leg would be attached in the opposite direction).



****CONTINUED ON NEXT PAGE****

2. TABLETOP SELECTION:

- The system can support up to 50 lbs of weight. This includes the weight of the tabletop plus anything placed on it.
- Maximum tabletop size 30" x 40".
- Minimum thickness: 5/8".

3. TABLETOP INSTALLATION:

- Flip the tabletop upside down to install the table mounting plate to the underside of the tabletop.
- Install the table mounting place as centered as possible. **NOTE:** Screws must be installed at least 1/2 the depth of the tabletop for stability reason, using caution so they don't protrude through the tabletop.

4. SYSTEM ASSEMBLY:

- Loosen handles on arm. Install the arm on the table mounting plate by sliding it over the splined tap. (You may have to move it back and forth). **NOTE:** Make sure the splined tap from the table mounting plate is fully inserted, so it is flush with the bushing on the arm. (See PHOTO 2) The washer side of the bushing must face towards the splined tap. (See PHOTO 1) Tighten handle.
- Repeat on the other end of the arm to install the arm onto the leg.
- Once all pieces are assembled, handles on the arm are tightened, flip system upright. **NOTE:** Make sure handles are repositioned.
- Loosen handle(s) on leg. Slide the leg onto the bracket and tighten leg handle(s) to secure in place. The bracket needs to be within the slotted groove on backside of leg. (SEE PHOTOS 3 & 4) **NOTE:** This step may require 2 people.
- When adjusting the height of the system, at least 1 inch of the slotted leg groove must be tightened onto the bracket. The more of the leg groove tightened to the bracket, the more stable the system.

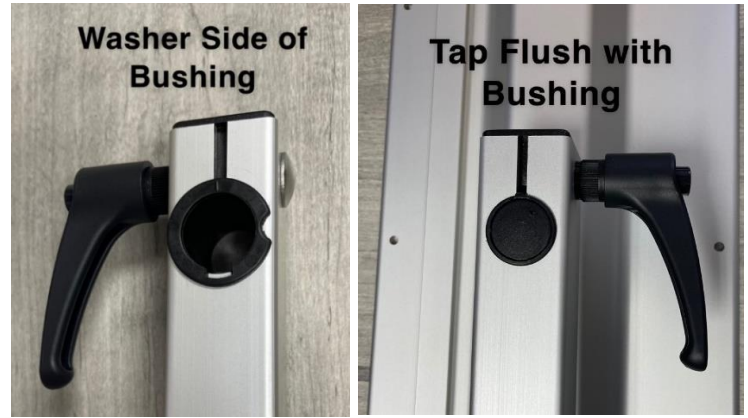


PHOTO 1

PHOTO 2



PHOTO 3

PHOTO 4

www.lagunusa.com

**1 YEAR WARRANTY FROM MANUFACTURER
DEFECTS (NON-TRANSFERABLE)**

**ANY MODIFICATIONS TO THE SYSTEM VOIDS
THE WARRANTY**

Answers To Frequently Asked Questions:
www.lagunusa.com/frequently-asked-questions

Caution!

Do not overtighten handle. It can cause thread damage, causing the handle to seize, which is not covered under warranty.

If desired, anti-seize for stainless steel may be applied.